

## Author Correction: Genetic resources resistant to black spot (*Alternaria alternata*) identified from *Chrysanthemum*-related genera and potential underlying mechanisms

Qingling Zhan , Wenjie Li, Ye Liu, Shuang Zhao, Sumei Chen, Weimin Fang, Fadi Chen and Zhiyong Guan\*

State Key Laboratory of Crop Genetics and Germplasm Enhancement / Key Laboratory of Flower Biology and Germplasm Innovation, Ministry of Agriculture and Rural Affairs / Key Laboratory of Biology of Ornamental Plants in East China, National Forestry and Grassland Administration / College of Horticulture, Nanjing Agricultural University, Nanjing 210095, China

\* Corresponding author, E-mail: [guanzhy@njau.edu.cn](mailto:guanzhy@njau.edu.cn)

Correction to: *Ornamental Plant Research* <https://doi.org/10.48130/opr-0023-0023>, published online 09 January 2024.

Since the publication of this article, the authors have noted several minor issues requiring corrections:

(1) Error in the Abstract

In the Abstract of the published article, instead of "*A. alternata*", it should be in italic as "*A. alternata*".

(2) Error in the section "Determination of antifungal activity of Germacrene D" under Materials and methods

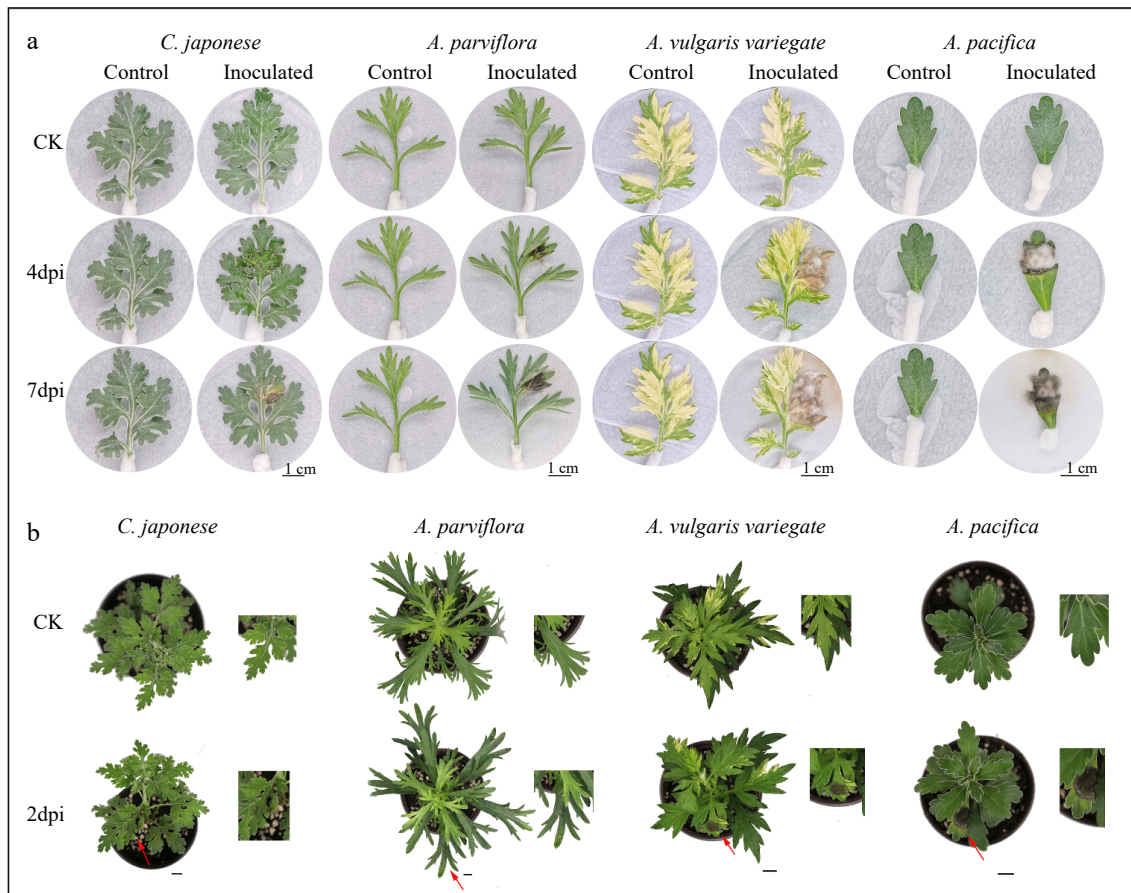
In the published article, "bacterial" should be replaced with "fungus" to align with the original intent.

(3) Error in the section of "Differences in leaf epidermis structure of resistant and susceptible germplasm" under Results

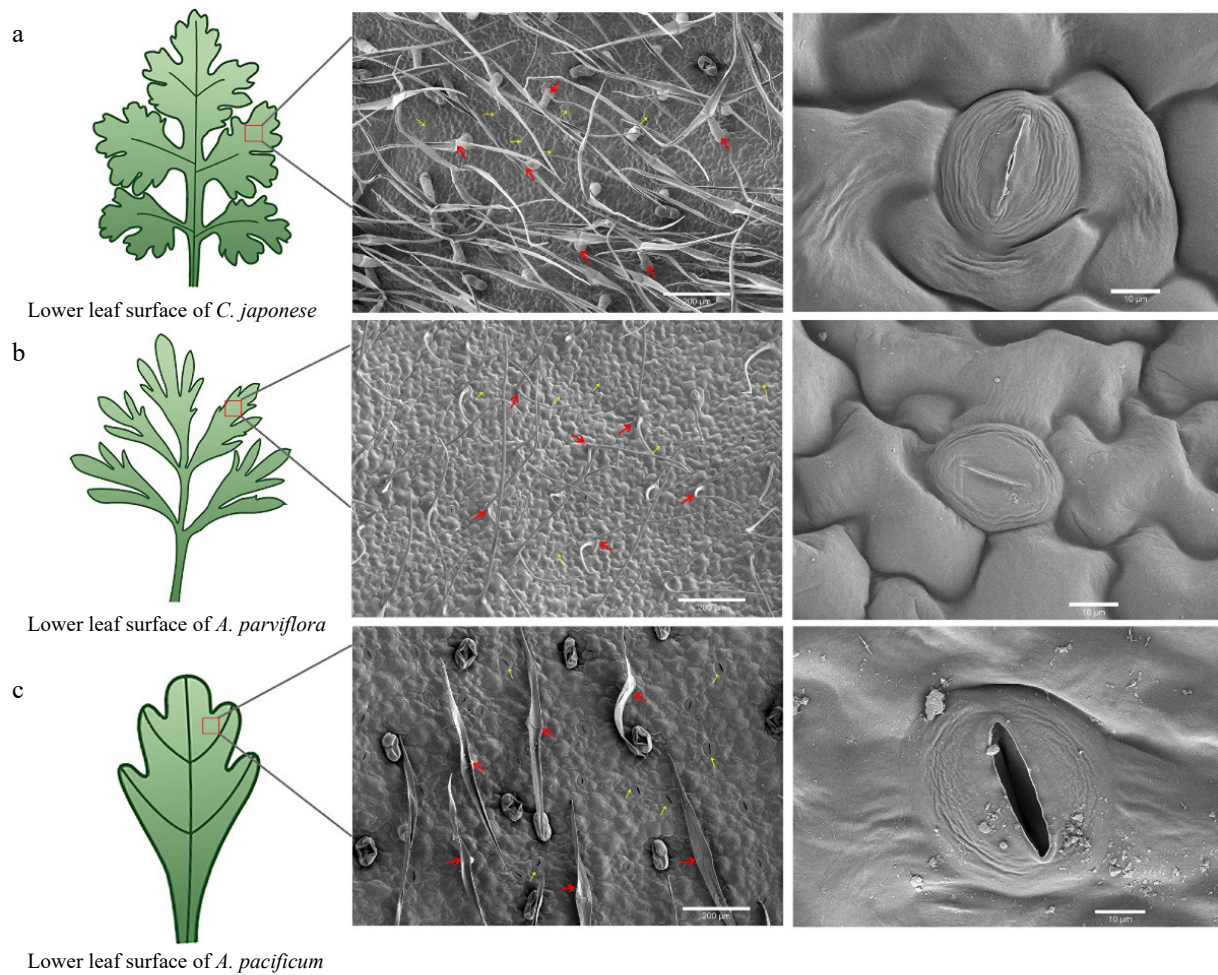
The term "the lower epidermal hairs" was non-standard and has been revised to "the lower epidermal trichome".

(4) Errors in the figures

In [Figure 1](#), *C. japonese* was mistakenly labeled as *C. japonese* (now corrected); in [Figure 2](#), '*A. parviflora*' was erroneously labeled as '*C. parviflora*' (now corrected);



**Fig. 1** Differences in disease phenotype of different plants after inoculation. From left to right: the disease degree of leaves deepens. n = 15. (a) Disease symptoms on 4 and 7 d after inoculation of isolated leaves. (b) Disease symptoms of whole plants at post 2 d inoculation. Scale bar = 1 cm.



**Fig. 2** Scanning electron microscopy (SEM) images of the lower epidermis of leaves from disease-resistant and susceptible materials. From left to right, the parts that were observed under the scanning electron microscope (red box part) showed the distribution and shape of trichome and stomata respectively. The red arrows indicate epidermal hairs, and the yellow arrows point to the stomata.

The authors would like to apologize for these errors.  
The original article has been corrected in the HTML and PDF versions.

Published online 18 February 2025  
<https://doi.org/10.48130/opr-0025-0008>



Copyright: © 2025 by the author(s). Published by Maximum Academic Press, Fayetteville, GA. This article is an open access article distributed under Creative Commons Attribution License (CC BY 4.0), visit <https://creativecommons.org/licenses/by/4.0/>.